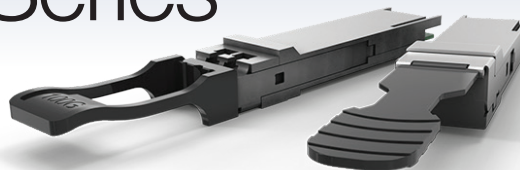


QSFP28 100 Gigabit Series

100 Gigabit Quad Small Form-Factor Pluggable Modules

The Allied Telesis QSFP28 Series offers the latest industry-standard connectivity in a flexible, small form factor. These hot-swappable transceiver modules simply plug into any compatible Allied Telesis product.



Options

Allied Telesis QSFP28 Series 100 Gigabit Quad Small Form-Factor Pluggables (QSFPs) are supported on all Allied Telesis devices with QSFP28 uplink connections.

The QSFP28 is hot-swappable to allow for network changes without removal or reconfiguration of costly network equipment.

Applications

The QSFP28 Series supports 100GbE interconnects. They are ideal for Datacom/Telecom switch and router connections, as well as data aggregation, backplane, proprietary protocol and high-density applications.

Interoperability

The Allied Telesis QSFP28 is fully compliant with industry-standard networking regulations so it may be used on any networking equipment which complies with industry standards.

Key Features

- ▶ Compliant to IEEE 802.3bm 100GBASE-SR4 standard (QSFP28-SR4)
- ▶ Compliant to IEEE 802.3ba 100GBASE-LR4 standard (QSFP28-LR4)
- ▶ MSA compliant
- ▶ Compliant to SFF-8665 (QSFP28 Solution) Revision 1.8
- ▶ Up to 25Gbps data rate per wavelength
- ▶ Up to 10 km transmission on single mode fiber (SMF)
- ▶ Operating case temperature: 0~70°C
- ▶ Low power consumption of max 2.5W (Typ. 1.8W) (SR4) and 4.0W (LR4)
- ▶ MPO connector (SR4)
- ▶ LC duplex connector (LR4)
- ▶ RoHS-6 compliant

Specifications

Power Consumption

Power consumption: QSFP28-SR4: <2.5W
 QSFP28-LR4: <4.0W

Environmental

Operating temperature 0°C to 70°C (32°F to 158°F)
 Storage temperature -40°C to 85°C (-40°F to 185°F)
 Relative humidity 0 to 85% non-condensing

PRODUCT	FIBER TYPE	CONNECTOR TYPE	MAXIMUM DISTANCE	WAVE-LENGTH (nm)	DDM*	TRANSMIT (dBm)		RECEIVE SENSITIVITY (dBm)	POWER BUDGET (dBm)	OVERLOAD (dBm)	OPERATING TEMPERATURE
						MIN	MAX				
QSFP28-SR4	MMF	MPO	100 m on OM4 fiber	850	Yes	-6	3	-12	6	3	0°C to 70°C (32°F to 158°F)
QSFP28-LR4	SMF	LC	10 km	1296 nm** 1300 nm** 1304 nm** 1308 nm**	Yes	-4	4	-9	5	5	0°C to 70°C (32°F to 158°F)

*Digital Diagnostics Monitoring

** Central wavelengths of the 4 CWDM channels

Ordering Information

AT-QSFP28-SR4

100G, QSFP28 SR4, MMF, MPO-12

AT-QSFP28-LR4

100G, QSFP28 LR4, SMF, LC