

ACCURANCE OV-102

Anti-tailgating system

OUTDOOR PROTECTION

INDOOR PROTECTION

REDWALL

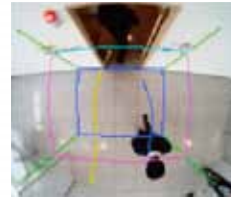
ACCESS CONTROL

TECHNICAL INFORMATION



Unique algorithm for anti-tailgating detection
[Vector focal method]

The Accurance OV-102 grasps and tracks a shape of human sterically by a unique image sensing technology. The system can recognize complicated movement and the number of people at high rate and accuracy.



FEATURES

- Door cancel function
Ignore door movement on installation side of detection unit.
- Workability
Install on existing door
- Detection area adjustability
Detection area can be adjusted after installation of detection unit.
- Sensitivity adjustability
Sensitivity can be adjusted after installation

SPECIFICATIONS

Items	Specifications		Remarks
Detection Method	Vector Focusing Method		
Detection Accuracy	> 95% (by own criteria)		
Supply Voltage	Power over Ethernet IEEE 802.3 af		
Warm-up time	Approx. 45 sec.		
Power Consumption	Control box	10 W max.	
	Detection unit	10 W max.	
Indicator	Control box	Green	Power, Authorization, Normal entry (lit)
		Red	Tailgating (lit) / Multiple detections (blinking)
		Green / Red	Warm-up (lit) / Trouble (blinking) Communication trouble (alternative blinking)
	Detection unit	Green	Power (lit) / Normal entry (blinking)
		Red	Tailgating (lit) / Multiple detections (blinking)
		Orange	Warm-up (lit) / Trouble (blinking) Communication trouble (alternative blinking)
Dimensions	Control box	265 × 135 × 31 mm	(W × H × D)
	Detection unit	193 × 85 × 34 mm	(W × H × D)
Weight	Control box	800 g	
	Detection unit	220 g	
Operating Temperature	0 to 50°C		
Operating Humidity only under no condensation	< 80% RH		only under no condensation
Operating Illuminance only the outline of an object is shown	100 to 20,000 lux *1		only the outline of an object is shown
Applicable Door Type	Manual Swing Door/Automatic Slide Door		
Install location	Control box	Wall / stationary	Interior only
	Detection unit	Ceiling	Interior only
Mounting Height	Detection unit	2.5 to 4.0 m *2	It may be limited by environmental conditions.
LAN wiring	CAT5e or larger		100 m max. in length
	Ethernet		100Base-T(X) Protocol : TCP/UDP(IPv4), ARP, ICMP or HTTP 26/37bit
Input terminal *3	Authorization	N.O./N.C. no voltage Wiegand	
	Door open	N.O./N.C. no voltage	Use supplied magnet switch when disable to get
	Door locked		
	Disable output *4		
	Output reset		
Output terminal *3	Tailgating①	MOS FET relay N.O./N.C. no voltage 30 V DC 0.2 A or less (Resistibility load)	Variable timer 0.2 to infinity
	Tailgating②		Pulse output for every entry
	Normal entry		One shot/Timer switching
	Number of pass		Pulse output for authorization
	Unlock command		Pulse output for authorization
	Authorization number		Continuous output during multiple detections *5
	Multiple detections		Output when disable to detect
	Error		

*1 OV-102 always requires 100 lux or more.

*2 Maximum width of door opening is 2 m when mounting at 2.5 m high.

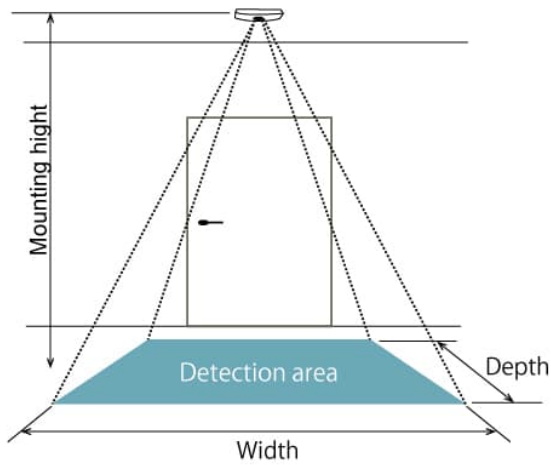
*3 Input/output relays can be selected N.O./N.C. by the dipswitch.

*4 "Disable output" is recommended to use for an entrance with carriage or luggage. They may make a false detection.

*5 Multiple detections must be ON by the dipswitch settings.

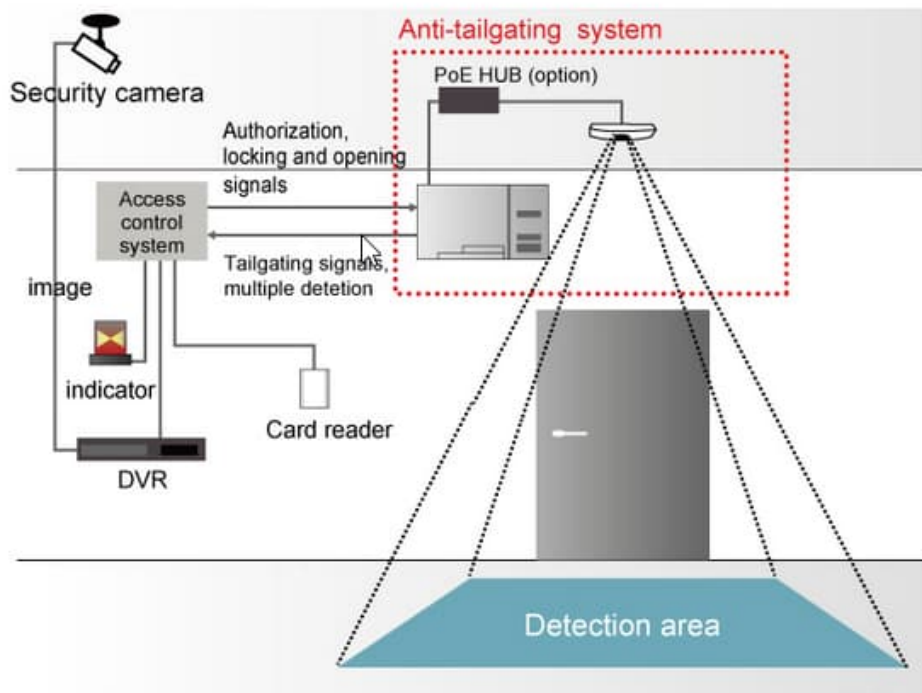
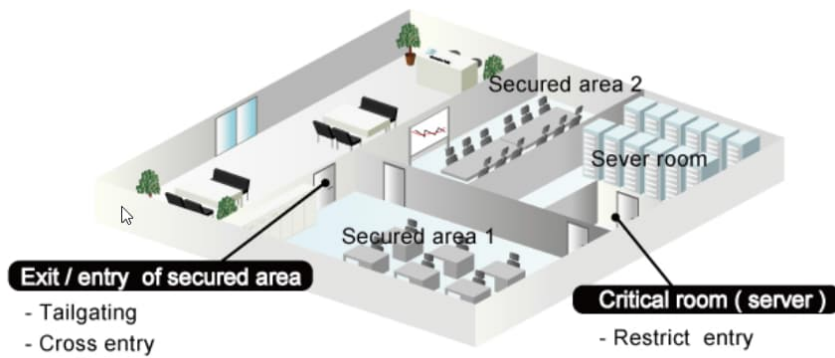
The images taken by this product are used only for the judgment processing performed inside this product and are deleted immediately after such processing.

Optex OPXOV-102CB(E) Detection Area:



unit : mm

Mounting hight	Depth	Width
2400	1200	1900
2500	1400	2000
2600	1600	2200
2700	1700	2300
2800	1900	2400
2900	2100	2500
3000	2200	2700
3500	3100	3300
4000	4000	4000



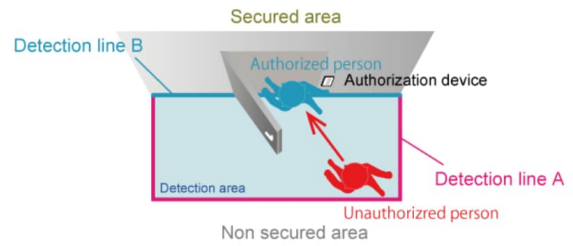
System configuration

Optex OPXOV-102CB(E) Scenarios:

Tailgating entry

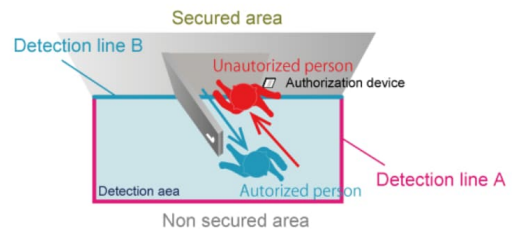
Generate output when unauthorized person follows authorized person and pass detection line A (pink line) -> detection line B (blue line) in order.

※ Another set of the system is required for two way entry.



Cross entry

Generate output for unauthorized person entry when authorized person exits.



Multiple detection

Generate multiple detection output when multiple people stay in the detection area.

