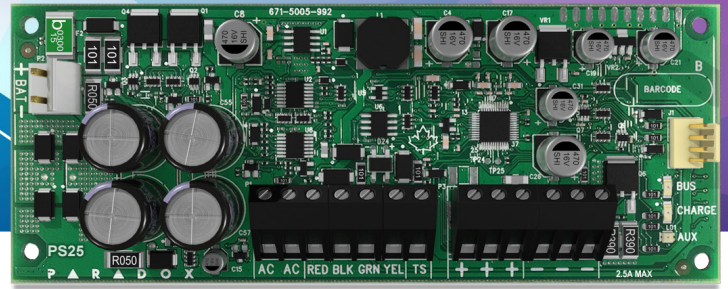


PS25

2.8A Supervised Power Supply



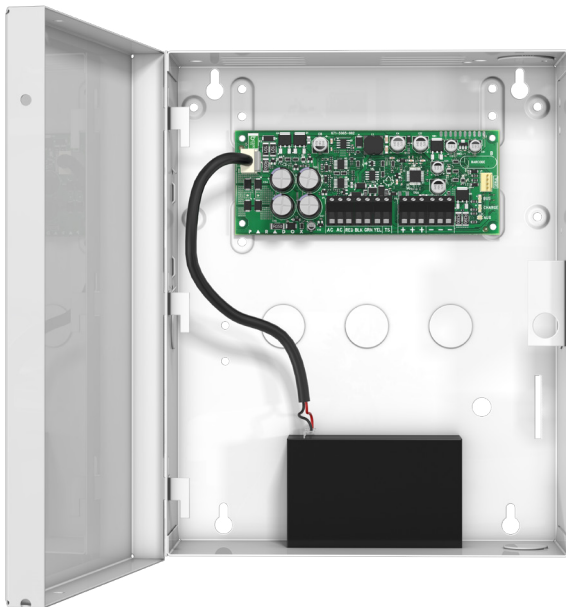
Description

The PS25 is a 2.8A supervised switching power supply that connects to Paradox control panel bus or may work as a standalone power supply.

The PS25 provides a maximum of 2.5A (13.8 Vdc) continuous auxiliary power output and charge a battery with 300 mA, battery charging current may increase up to 1.2A if Auxiliary current is reduced accordingly.

When connected to a Paradox panel bus, it will provide feedback on AC supply, output voltage, current and warning before disconnect auxiliary output when battery is drained. Troubles can be viewed on BabyWare, reported or sent via push notification. The PS25 will provide AUX power regardless of the panel connection.

It is easy to install via 4-wires directly to the keypad bus.



Features

- 2.8A supervised power supply
- 2.5A auxiliary power output and up to 1.2A flexible battery
- On-board, auto-sensing anti-tamper switch
- Standalone operation

Specifications

AC Power	16 Vac, 40 VA, 50-60 Hz
Auxiliary Power	2.5A maximum 13.8 Vdc when AC present 12.8 Vdc or battery 1V when battery supply Disconnect at 9.5V
Battery	12 Vdc, 4 Ah to 14 Ah
Charging	300 mA min to 1200 mA (redirect from auxiliary if less than 2.5A)
Operating Temperature	-20 to 50° C (-4 to 122° F)
Humidity	95% maximum
Bus Supervision	AC, Aux voltage
Dimensions (H x W x D)	5.6 x 14 x 2.5 cm (2.2 x 5.5 x 0.9 in.)
Certification	CE
Compatibility	EVO192, EVOHD all versions, MG5050, SP5500, SP6000, SP7000 V7.14 and higher



Specifications PRX278000033-P2C

The PRX278000033-P2C is a metal box enclosure for provision multiple module and panel mounting.

Features:

- Many punch-out holes for simple wiring
- Easy door removal
- Sizes: 28cm X 28cm X 7.6cm (11" x11" x 3")

P ▲ R ▲ D O X™



VRLA 12V7AH

SA12V7

Specifications

Nominal Voltage	12 V	
Nominal Capacity 20HR	7.0 AH	
Dimensions	Length	151±1mm (5.94 inches)
	Width	65±1mm (2.56 inches)
	Container Height	95±1mm (3.74 inches)
	Total Height (with terminal)	100±1mm (3.94 inches)
Approx Weight	Approx 2.10 kg (4.63 lbs)	
Terminal	F1	
Container Material	ABS Plastic	
Lead Material	Purity Lead 99.995%	
Sulfuric Acid	Distilled Sulfuric Acid (Zero metal content)	
Separator	AGM	
Rated Capacity	7.00 AH/0.350A	(20hr, 1.80V/cell, 25°C/77°F)
	6.53 AH/0.653A	(10hr, 1.80V/cell, 25°C/77°F)
	6.00 AH/1.20A	(5hr, 1.75V/cell, 25°C/77°F)
	5.37 AH/1.79A	(3hr, 1.75V/cell, 25°C/77°F)
	4.55 AH/4.55A	(1hr, 1.60V/cell, 25°C/77°F)
Max. Discharge Current	105A (5s)	
Internal Resistance	Approx 23mΩ	
Operating Temp.Range	Discharge	: -15 - 50°C (5 - 122°F)
	Charge	: 0 - 40°C (32 - 104°F)
	Storage	: -15 - 40°C (5 - 104°F)
Nominal Operating Temp.Range	25±3°C (77±5°F)	
Cycle Use	Initial Charging Current less than 2.1A. Voltage 14.4V - 14.7V at 25°C (77°F) Temp.Coefficient -30mV/°C	
Standby Use	No limit on Initial Charging Current Voltage 13.5V - 13.8V at 25°C (77°F) Temp.Coefficient -20 mV/°C	
Capacity affected by Temperature	40°C (104°F) 103% 25°C (77°F) 100% 0°C (32°F) 86%	
Self Discharge	Sentry AGM series batteries may be stored for up to 6 months at 25°C (77°F) and then a freshening charge is required. For higher temperatures the time interval will be shorter.	



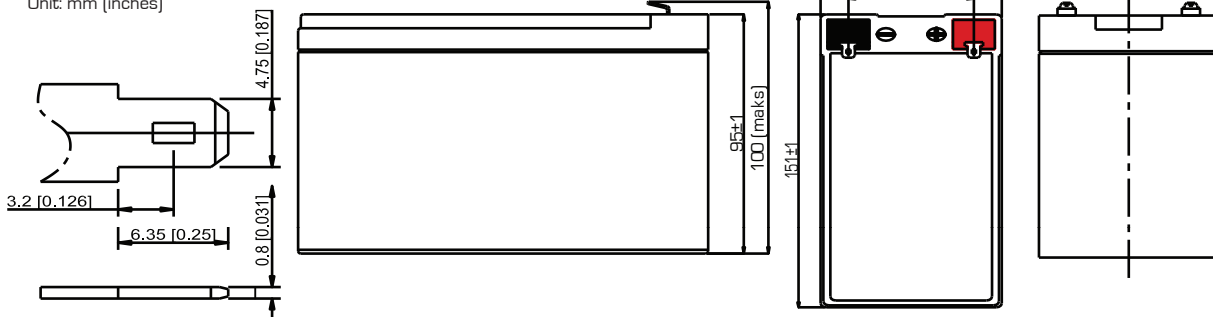
Applications

- All purpose
- Standby Applications
- Recreation Vehicles
- Uninterruptible Power Supply (UPS)
- Electric Power System (EPS)
- Fire & Security
- Generators
- Medical Equipment

Dimensions

F1 Terminal

Unit: mm (inches)



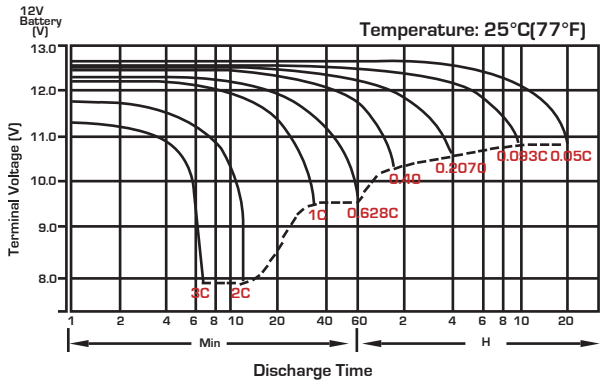
Constant Current Discharge (Amperes) at 25°C (77°F)

F.V./Time	5min	10min	15min	20min	30min	45min	1h	2h	3h	4h	5h	6h	8h	10h	20h
1.85V/cell	18.0	12.8	10.48	8.79	6.53	4.79	3.86	2.29	1.69	1.36	1.14	0.98	0.774	0.640	0.345
1.80V/cell	21.4	14.3	11.4	9.44	6.94	5.05	4.03	2.38	1.74	1.40	1.17	1.01	0.791	0.653	0.350
1.75V/cell	24.2	15.6	12.2	10.0	7.29	5.27	4.18	2.45	1.79	1.43	1.20	1.03	0.805	0.663	0.357
1.70V/cell	26.7	16.7	12.9	10.5	7.59	5.46	4.32	2.51	1.83	1.46	1.22	1.05	0.817	0.672	0.361
1.65V/cell	28.8	17.7	13.5	10.9	7.86	5.62	4.46	2.57	1.86	1.48	1.23	1.06	0.826	0.680	0.365
1.60V/cell	30.6	18.6	14.1	11.3	8.09	5.76	4.55	2.61	1.89	1.50	1.25	1.07	0.834	0.685	0.367

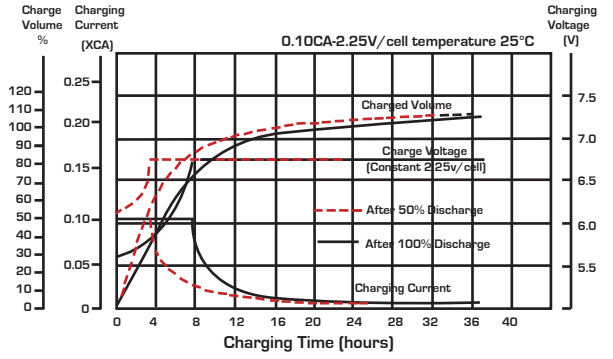
Constant Power Discharge (Watts/Cell) at 25°C (77°F)

F.V./Time	5min	10min	15min	20min	30min	45min	1h	2h	3h	4h	5h	6h	8h	10h	20h
1.85V/cell	34.2	24.5	20.2	17.1	12.8	9.44	7.64	4.56	3.37	2.72	2.29	1.99	1.565	1.296	0.701
1.80V/cell	40.2	27.2	21.9	18.3	13.5	9.91	7.96	4.72	3.47	2.79	2.34	2.03	1.593	1.318	0.708
1.75V/cell	45.1	29.5	23.3	19.3	14.2	10.3	8.23	4.85	3.55	2.85	2.39	2.06	1.616	1.344	0.719
1.70V/cell	49.2	31.3	24.5	20.1	14.7	10.6	8.48	4.96	3.62	2.89	2.42	2.09	1.633	1.347	0.725
1.65V/cell	52.6	32.9	25.5	20.8	15.2	10.9	8.73	5.05	3.68	2.93	2.45	2.11	1.649	1.359	0.731
1.60V/cell	55.5	34.3	26.3	21.5	15.5	11.2	8.88	5.12	3.72	2.96	2.47	2.13	1.660	1.367	0.734

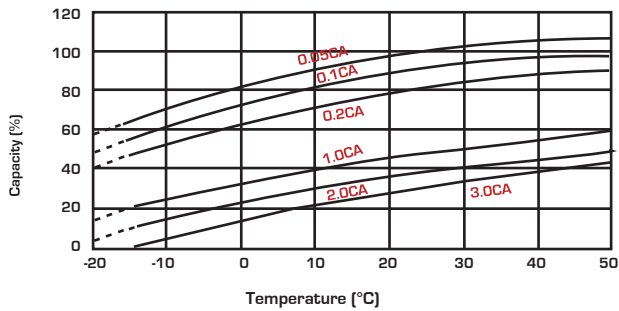
Discharge Characteristics



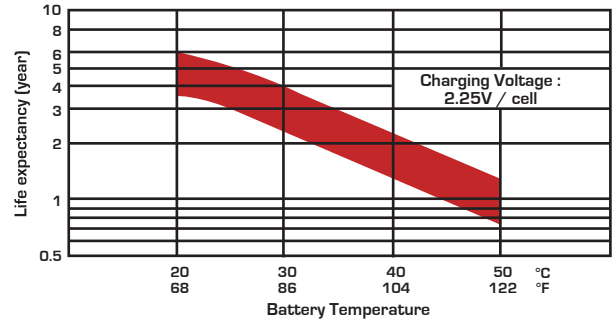
Float Charging Characteristics



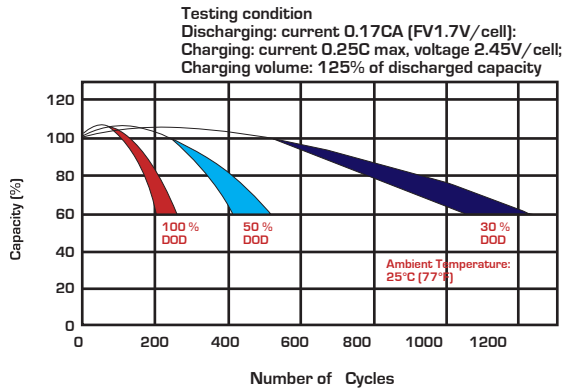
Temperature Effects in Relation to Battery Capacity



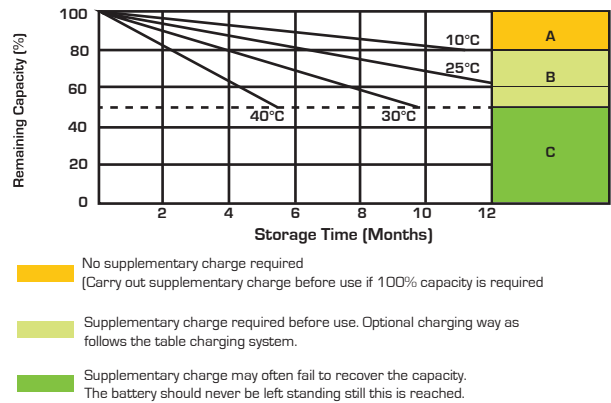
Effect of Temperature on Long Term Float Life



Cycle Life in Relation to Depth of Discharge



Self Discharge Characteristics



Charging System

DOD	Current Limit (A)	Constant Voltage (V)	Fully Charged Time (h)
20	0.15C ₁₀	13.5-13.8 vpc (12V)	10
	0.20C ₁₀	6.75-6.9 vpc (6V)	8
50	0.15C ₁₀	13.5-13.8 vpc (12V)	15
	0.20C ₁₀	6.75-6.9 vpc (6V)	12
80	0.15C ₁₀	13.5-13.8 vpc (12V)	16
	0.20C ₁₀	6.75-6.9 vpc (6V)	14
100	0.15C ₁₀	13.5-13.8 vpc (12V)	20
	0.20C ₁₀	6.75-6.9 vpc (6V)	18

State of Charge (SOC)

Open Circuit Voltage (V/cell)	Open Circuit Voltage (12V/cell)	Open Circuit Voltage (6V/cell)	State of Charge (% of full charge capacity)
2.14-2.15	12.84-12.90	6.42-6.46	100
2.12-2.13	12.72-12.78	6.36-6.39	90
2.11	12.66	6.33	80
2.09	12.54	6.27	70
2.07	12.42	6.21	60
2.05	12.30	6.15	50



Sealed Performance Batteries

Domestic Sales | Ph: +61 (0)7 3386 1102 | Fax: +61 (0)7 3102 9913
 sales@spb.net.au | www.sealedperformance.com.au
 National Warehouse | 1 Ant Road | Yatala, Brisbane QLD 4207
 Melbourne Office | 2/9 Compark Circuit | Mulgrave, Melbourne VIC 3170

In-Line AC Adaptor 66A Series - T1630S/T



FEATURES

Premium large size AC adaptor with 48 Watt maximum capacity. Features include ventilated case, flush LED indicator. The insulated pins are compliant with AS/NZS3112. Dimensions 140(W) x 83(H) x 68.5(D)mm. Electrical Safety Authority Approved.

CAT#	OUTPUT	OUTPUT PLUG
T1630S/T	16V AC 3.0A	Stripped/Tinned

OUTPUT

Output Voltage	16V AC
Maximum Load Current	3000mA
Rated Output Power	48W
Output overshoot	10% of nominal voltage value
Turn-on Delay (Max)	5 Seconds at nominal input AC voltage and full load
Hold-up Time (Min)	10mS minimum at nominal input AC voltage and full load
Temperature coefficient	Output voltage temperature coefficient $\pm 0.05\%/^{\circ}\text{C}$
Rise Time	Start-up rise time of 10mS to rise to within regulation limits

To view Access' extensive ranges go to: www.accesscomms.com.au

Sydney (Head Office)
Brisbane Office
Melbourne Office
Adelaide Office

33-35 Alleyne Street, Chatswood, NSW, 2067
Unit 4, 7 Luke Street, Lytton, QLD, 4178
28 The Gateway, Broadmeadows, VIC, 3047
71 Anzac Highway, Ashford, SA, 5035

Phone: (02) 9414 8888
Phone: (07) 3308 5555
Phone: (03) 9330 8333
Phone: (08) 8338 5540

Fax: (02) 9414 8800
Fax: (07) 3308 5500
Fax: (03) 9330 8330
Mob: 0438 245 116

websales@accesscomms.com.au
brisbane@accesscomms.com.au
melbourne@accesscomms.com.au
adelaide@accesscomms.com.au

In-Line AC Adaptor

66A Series - T1630S/T

INPUT

	MINIMUM	RATED	MAXIMUM
Input Voltage	90V AC	100 – 240V AC	264V AC
Input Frequency	47 Hz	50 / 60 Hz	63 Hz
Input Current*			450mA
At full load cold start	the inrush current will not exceed 60A, do not result any damage & the input fuse shall not be blown up.		

* At 100-240V AC

POWER CONSUMPTION AT NO LOAD

Input current	450mA max at 1-00-240V AC
Power consumption (no load)	0.5W max

ENVIRONMENTAL

Cooling	Natural convection
Operating Temperature	0°C to +60°C
Storage Temperature	-30°C to +85°C
Operating Humidity	10 ~ 90 % Non-continng
Storage Humidity	10 ~ 90 % Non-condensing

To view Access' extensive ranges go to: www.accesscomms.com.au

Sydney (Head Office)

Brisbane Office

Melbourne Office

Adelaide Office

33-35 Alleyne Street, Chatswood, NSW, 2067

Unit 4, 7 Luke Street, Lytton, QLD, 4178

28 The Gateway, Broadmeadows, VIC, 3047

71 Anzac Highway, Ashford, SA, 5035

Phone: (02) 9414 8888

Phone: (07) 3308 5555

Phone: (03) 9330 8333

Phone: (08) 8338 5540

Fax: (02) 9414 8800

Fax: (07) 3308 5500

Fax: (03) 9330 8330

Mob: 0438 245 116

websales@accesscomms.com.au

brisbane@accesscomms.com.au

melbourne@accesscomms.com.au

adelaide@accesscomms.com.au

In-Line AC Adaptor

66A Series - T1630S/T

MECHANICAL

Dimensions	140(L) x 83(W) x 68.5(D)mm.
Input Plug Type	SAA 3-pin AS/NZS3112
Output Cord	20AWG / 3C , Stripped/Tinned

RELIABILITY

Mean Time Between Failure (MTBF)	The power supply is designed to have a MTBF of 20,000 hours.
----------------------------------	--

SAFETY

Insulation Resistance	100MΩ at 500V DC between Input to Output
Dielectric withstanding voltage test (Hi-pot test) input to output	4KV, 50Hz for 1 minute
Standard	AS/NZS 61558

ENERGY EFFICIENCY

Compliance	AS/NZS CISPR22
------------	----------------

To view Access' extensive ranges go to: www.accesscomms.com.au

Sydney (Head Office)

Brisbane Office

Melbourne Office

Adelaide Office

33-35 Alleyne Street, Chatswood, NSW, 2067

Unit 4, 7 Luke Street, Lytton, QLD, 4178

28 The Gateway, Broadmeadows, VIC, 3047

71 Anzac Highway, Ashford, SA, 5035

Phone: (02) 9414 8888

Phone: (07) 3308 5555

Phone: (03) 9330 8333

Phone: (08) 8338 5540

Fax: (02) 9414 8800

Fax: (07) 3308 5500

Fax: (03) 9330 8330

Mob: 0438 245 116

websales@accesscomms.com.au

brisbane@accesscomms.com.au

melbourne@accesscomms.com.au

adelaide@accesscomms.com.au