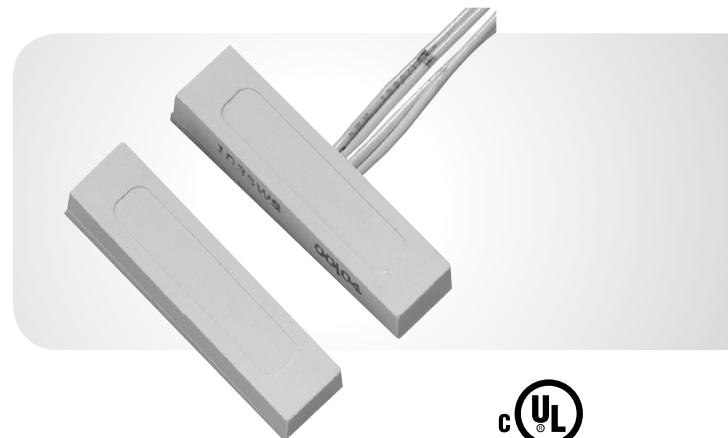


Miniature Magnetic Contacts with Wire Leads

1035 Series



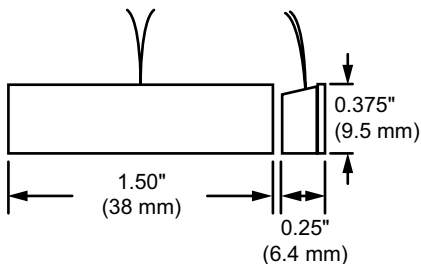
OVERVIEW

The 1035 Series magnetic contacts save installation time through the use of a specially formulated 3M[®] adhesive tape. The tape, which establishes a permanent bond between the contact and the surface, can be repositioned in the first five minutes. A low profile and small footprint combine with reliable technology to make the 1035 Series contacts a good choice for applications where drilling holes is impractical.

A wide gap model is available to protect against false alarms from loose-fitting doors and windows.

These high performance magnetic contacts have been designed to facilitate installation and ensure durability and dependability. Rated at 10,000,000 cycles, every reed connection is hand soldered and each magnetic contact is 100% tested before leaving the factory.

Dimensional Diagram



Ordering Information

1035-N	Surface Mount Miniature Self-adhesive Contact w/Wire Leads, 5/8" Gap Size, Closed Loop, White
1035W-N	Surface Mount Miniature Self-adhesive Contact w/Wire Leads, Wide Gap, 1" Gap Size, Closed Loop, White
Accessories	
1927-N	Magnet, 1035 Series, White

STANDARD FEATURES

- Press fit design makes installation easy — no screws or glue needed
- Attractive, low-profile design
- Flat-sided head for use in limited spaces
- 1/4 in. diameter
- UL/ULC Listed

Specifications

Voltage	100 VAC/VDC max.
Current	0.5 A max.
Power	7.5 W max.
Loop type	Closed
Electrical Configuration	Normally open
Gap Distance*	
1035	Up to 5/8 in. (16mm)
1035W	Up to 1 in. (25mm)
Temperature Range	-40°F to 150°F (-40°C to 65°C)
Response Time	1 msec max.
Lead Type	1 ft. (30cm) #22 wire
Housing	Flame retardant ABS plastic
NEMA Rating	1, 2, 3, 4, 4x, 5, 6, 12
Protection Class	IP 67
Color	White
Regulatory	UL634, ULC/ORD-C634

*Gap distances are nominal 'make' distance ± 20%. Gap Specifications are for switch to 'make'. 'Break' distance is approximately 1.1 to 1.5 times 'make'.