

WMVE Series Mounts

WALL MOUNTS, LIGHT DUTY

Product Features

- Indoor and Outdoor Installations Supported
- Durable Aluminum Mount Construction
- For Use with Next Generation Sarix® Enhanced, Sarix Enhanced, Sarix Professional, and Camclosure® 2 Series Pendant Mounts
- Converts to Pole Mount with a PA101 Pole Mount Adapter



The WMVE-SR and WMVE-SW wall mounts can be installed directly to a wall or any vertical surface. Power and video wiring can be easily routed through the back of each mount or through the conduit access located on the bottom of the mount arm. The WMVE-SR/WMVE-SW wall mounts can be adapted to pole mount applications using the PA101 pole mount adapter.

PELCO

by Schneider Electric

International Standards
Organization Registered Firm;
ISO 9001 Quality System



C285 / REVISED 9-26-17

MODEL


WMVE-SR	Light gray wall mount specifically designed for use with Next Gen Sarix Enhanced (environmental models), IMEx19-1VP, IMEx19-1EP, IM-VEPM, IMPBB-EP, IE-P, and Camclosure 2 Series pendant mounts
WMVE-SW	White wall mount specifically designed for use with the Next Gen Sarix Enhanced (indoor models), IMEx19-1P and IMPBB-P indoor pendant mounts

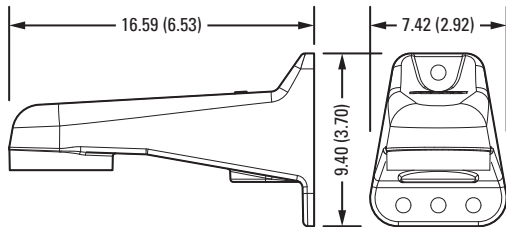
MECHANICAL

Mounting Method	Secure with 1/4-in. fasteners of appropriate type (not supplied); up to 4 fasteners can be used
Cable Entry	Through the back of the mount and one 1.9 cm (3/4 in.) conduit access on the bottom of the mount
Pole Mount Method	Attach to PA101 pole mount adapter bolts

GENERAL

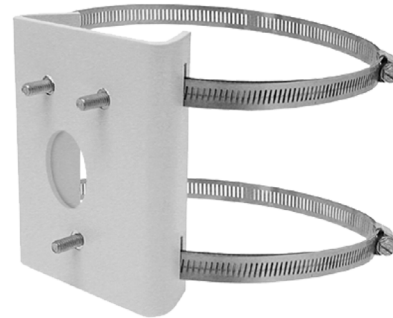
Construction	Aluminum Finish
Finish	
WMVE-SR	Light gray polyester powder coat
WMVE-SW	White polyester powder coat
Unit Weight	1.00 lb (0.45 kg)

 VALUES IN PARENTHESES ARE INCHES; ALL OTHERS ARE CENTIMETERS. DRAWINGS AND DIMENSIONS NOT TO SCALE.



RELATED PRODUCT

PA101	Pole mount adapter for WMVE-SR/WMVE-SW mounts when used in pole mount applications. Stainless steel straps supplied. Straps fit 7.62 cm (3 in.) to 20.3 cm (8 in.) diameter pole.
IMM-CM	Corner mount (outer) for use with WMVE-SR wall mount



Pelco by Schneider Electric
3500 Pelco Way, Clovis, California 93612-5699 United States
USA & Canada Tel (800) 289-9100 Fax (800) 289-9150
International Tel +1 (559) 292-1981 Fax +1 (559) 348-1120
www.pelco.com www.pelco.com/community

▲ WARNING: Cancer and Reproductive Harm - www.P65Warnings.ca.gov.
▲ ADVERTENCIA: Cáncer y Daño Reproductivo - www.P65Warnings.ca.gov.
▲ AVERTISSEMENT: Cancer et Troubles de l'appareil reproducteur - www.P65Warnings.ca.gov.

Pelco, the Pelco logo, and other trademarks associated with Pelco products referred to in this publication are trademarks of Pelco, Inc. or its affiliates. ONVIF and the ONVIF logo are trademarks of ONVIF Inc. All other product names and services are the property of their respective companies. Product specifications and availability are subject to change without notice. ©Copyright 2016, Pelco, Inc. All rights reserved.